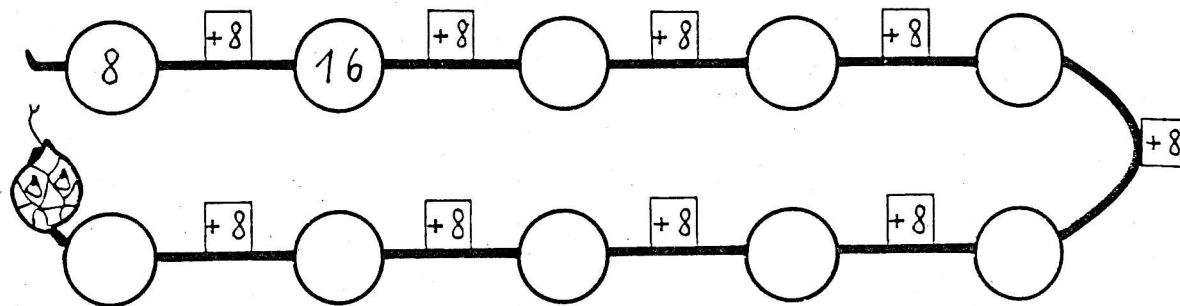


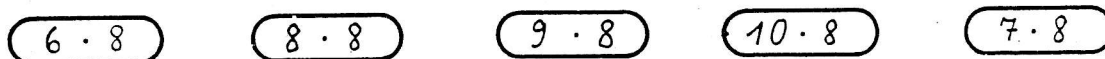
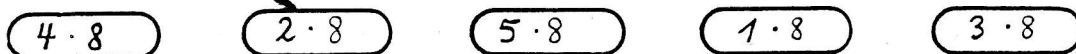
Die 8er - Reihe



$1 \cdot 8 = \square$ $2 \cdot 8 = \square$ $3 \cdot 8 = \square$ $4 \cdot 8 = \square$

$5 \cdot 8 = \square$ $6 \cdot 8 = \square$ $7 \cdot 8 = \square$ $8 \cdot 8 = \square$

$9 \cdot 8 = \square$ $10 \cdot 8 = \square$



$3 \cdot 8 = \square$

$2 \cdot \square = 16$

$\square \cdot 8 = 32$

$4 \cdot 8 = \square$

$\square \cdot 8 = 80$

$9 \cdot \square = 72$

$6 \cdot 8 = \square$

$5 \cdot \square = 40$

$7 \cdot \square = 56$

$8 \cdot 8 = \square$

$\square \cdot 8 = 8$

$\square \cdot 8 = 40$

